

## Lead Type Fixed Inductors

### Radial Choke Coils RI Series(徑向電感線圈-----RI 系列)



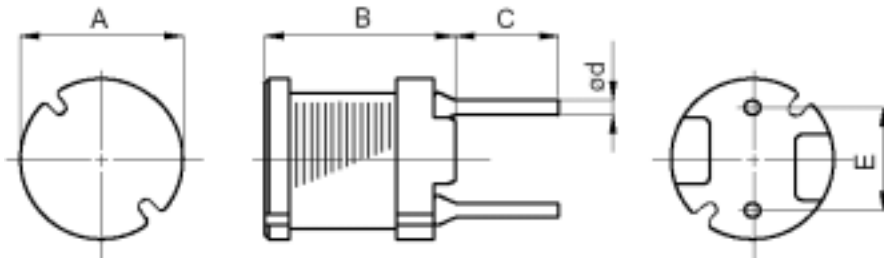
#### Features(特徵):

1. Stand-off is incorporated to core body. (支座與鐵芯本體結合。)
2. Rugged reliability and performance fixed inductor. (嚴格的可靠度及表現一致的電感。)

#### Applications(應用):

Excellent as DC-DC converter boost or buck inductors. Also used for filtering applications.  
適合用於直流—直流整流器或作為低階電感，也可用於濾波應用。

#### Shape & Dimensions(外觀呎吋):



Item	A(mm)	B(mm)	C(mm)	d(mm)	E(mm)
RI 0605	6.00 ± 0.5	5.00 ± 0.5	25.0 Typ.	0.50 ± 0.05	4.0 ± 0.4
RI 0606	6.00 ± 0.5	6.50 ± 0.5	25.0 Typ.	0.50 ± 0.05	4.0 ± 0.3
RI 0805	7.80 ± 0.5	5.50 ± 0.5	25.0 Typ.	0.65 ± 0.05	5.0 ± 0.3
RI 0807	7.80 ± 0.5	7.50 ± 0.5	25.0 Typ.	0.65 ± 0.05	5.0 ± 0.3
RI 0809	7.80 ± 0.5	9.50 ± 0.5	25.0 Typ.	0.65 ± 0.05	5.0 ± 0.3
RI 1006	10.0 ± 0.5	6.0 ± 0.5	25.0 Typ.	0.65 ± 0.05	6.4 ± 0.3
RI 1008	10.0 ± 0.5	8.0 ± 0.5	25.0 Typ.	0.65 ± 0.05	6.4 ± 0.3
RI 1010	10.0 ± 0.5	10.0 ± 0.5	25.0 Typ.	0.65 ± 0.05	6.4 ± 0.3
RI 1014	10.0 ± 0.5	14.4 ± 0.5	25.0 Typ.	0.80 ± 0.05	5.0 ± 0.5

#### Specification(規格):

##### RI0605 Series:

Part Number	Inductance (μH)	Test Frequency (Hz)	DC Resistance (Ohms) Max	Rated Current (A) Max
RI 0605-220K	22±10%	1V/2.52M	0.18	0.90
RI 0605-270K	27±10%	1V/2.52M	0.21	0.81
RI 0605-330K	33±10%	1V/2.52M	0.27	0.74
RI 0605-390K	39±10%	1V/2.52M	0.29	0.68
RI 0605-470K	47±10%	1V/2.52M	0.34	0.62
RI 0605-560K	56±10%	1V/2.52M	0.42	0.57
RI 0605-680K	68±10%	1V/2.52M	0.480	0.51
RI 0605-820K	82±10%	1V/2.52M	0.55	0.47
RI 0605-101K	100±10%	1V/1K	0.68	0.42
RI 0605-121K	120±10%	1V/1K	0.77	0.39
RI 0605-151K	150±10%	1V/1K	0.95	0.35
RI 0605-181K	180±10%	1V/1K	1.15	0.32
RI 0605-221K	220±10%	1V/1K	1.30	0.29
RI 0605-271K	270±10%	1V/1K	1.55	0.26
RI 0605-331K	330±10%	1V/1K	2.18	0.23
RI 0605-391K	390±10%	1V/1K	2.47	0.21
RI 0605-471K	470±10%	1V/1K	2.92	0.20
RI 0605-561K	560±10%	1V/1K	3.97	0.18
RI 0605-681K	680±10%	1V/1K	4.57	0.16
RI 0605-821K	820±10%	1V/1K	5.28	0.15

Test Equipment Inductance: WK3260B LCR Meter / DC Resistance:HP4338B Milliohms Meter.

## Lead Type Fixed Inductors

### RI0606 Series:

Part Number	Inductance ( $\mu\text{H}$ )	Test Frequency (Hz)	DC Resistance (Ohms) Max	Rated Current (A) Max
RI 0606-220K	22 $\pm$ 10%	1V/2.52M	0.11	1.27
RI 0606-270K	27 $\pm$ 10%	1V/2.52M	0.14	1.14
RI 0606-330K	33 $\pm$ 10%	1V/2.52M	0.17	1.03
RI 0606-390K	39 $\pm$ 10%	1V/2.52M	0.19	0.95
RI 0606-470K	47 $\pm$ 10%	1V/2.52M	0.23	0.87
RI 0606-560K	56 $\pm$ 10%	1V/2.52M	0.26	0.80
RI 0606-680K	68 $\pm$ 10%	1V/2.52M	0.280	0.72
RI 0606-820K	82 $\pm$ 10%	1V/2.52M	0.39	0.66
RI 0606-101K	100 $\pm$ 10%	1V/1K	0.43	0.59
RI 0606-121K	120 $\pm$ 10%	1V/1K	0.54	0.54
RI 0606-151K	150 $\pm$ 10%	1V/1K	0.64	0.48
RI 0606-181K	180 $\pm$ 10%	1V/1K	0.74	0.44
RI 0606-221K	220 $\pm$ 10%	1V/1K	0.96	0.40
RI 0606-271K	270 $\pm$ 10%	1V/1K	1.12	0.36
RI 0606-331K	330 $\pm$ 10%	1V/1K	1.48	0.33
RI 0606-391K	390 $\pm$ 10%	1V/1K	1.66	0.30
RI 0606-471K	470 $\pm$ 10%	1V/1K	1.91	0.27
RI 0606-561K	560 $\pm$ 10%	1V/1K	2.31	0.25
RI 0606-681K	680 $\pm$ 10%	1V/1K	2.67	0.23
RI 0606-821K	820 $\pm$ 10%	1V/1K	3.10	0.21
RI 0606-102K	1000 $\pm$ 10%	1V/1K	4.45	0.19

**Test Equipment** Inductance: WK3260B LCR Meter / DC Resistance:HP4338B Milliohms Meter.

### RI0805 Series:

Part Number	Inductance ( $\mu\text{H}$ )	Test Frequency (Hz)	DC Resistance (Ohms) Max	Rated Current (A) Max
RI 0805-100M	10 $\pm$ 20%	1V/2.52M	0.07	2.50
RI 0805-120M	12 $\pm$ 20%	1V/2.52M	0.08	2.40
RI 0805-150M	15 $\pm$ 20%	1V/2.52M	0.09	2.10
RI 0805-180M	18 $\pm$ 20%	1V/2.52M	0.10	2.00
RI 0805-220K	22 $\pm$ 10%	1V/2.52M	0.12	1.70
RI 0805-270K	27 $\pm$ 10%	1V/2.52M	0.14	1.60
RI 0805-330K	33 $\pm$ 10%	1V/2.52M	0.17	1.40
RI 0805-390K	39 $\pm$ 10%	1V/2.52M	0.21	1.30
RI 0805-470K	47 $\pm$ 10%	1V/2.52M	0.24	1.20
RI 0805-560K	56 $\pm$ 10%	1V/2.52M	0.31	1.10
RI 0805-680K	68 $\pm$ 10%	1V/2.52M	0.34	1.00
RI 0805-820K	82 $\pm$ 10%	1V/2.52M	0.40	0.93
RI 0805-101K	100 $\pm$ 10%	1V/1K	0.52	0.81
RI 0805-121K	120 $\pm$ 10%	1V/1K	0.59	0.76
RI 0805-151K	150 $\pm$ 10%	1V/1K	0.71	0.67
RI 0805-181K	180 $\pm$ 10%	1V/1K	0.89	0.62
RI 0805-221K	220 $\pm$ 10%	1V/1K	1.04	0.54
RI 0805-271K	270 $\pm$ 10%	1V/1K	1.28	0.49
RI 0805-331K	330 $\pm$ 10%	1V/1K	1.47	0.44
RI 0805-391K	390 $\pm$ 10%	1V/1K	1.67	0.41
RI 0805-471K	470 $\pm$ 10%	1V/1K	1.95	0.38
RI 0805-561K	560 $\pm$ 10%	1V/1K	2.83	0.35
RI 0805-681K	680 $\pm$ 10%	1V/1K	3.25	0.32
RI 0805-821K	820 $\pm$ 10%	1V/1K	3.82	0.31
RI 0805-102K	1000 $\pm$ 10%	1V/1K	5.28	0.25

**Test Equipment** Inductance: WK3260B LCR Meter / DC Resistance:HP4338B Milliohms Meter.

## Lead Type Fixed Inductors

### RI0807 Series:

Part Number	Inductance ( $\mu\text{H}$ )	Test Frequency (Hz)	DC Resistance (Ohms) Max	Rated Current (A) Max
RI 0807-100M	10 $\pm$ 20%	1V/2.52M	0.05	2.90
RI 0807-120M	12 $\pm$ 20%	1V/2.52M	0.06	2.50
RI 0807-150M	15 $\pm$ 20%	1V/2.52M	0.07	2.20
RI 0807-180M	18 $\pm$ 20%	1V/2.52M	0.08	1.90
RI 0807-220K	22 $\pm$ 10%	1V/2.52M	0.09	1.80
RI 0807-270K	27 $\pm$ 10%	1V/2.52M	0.11	1.70
RI 0807-330K	33 $\pm$ 10%	1V/2.52M	0.13	1.50
RI 0807-390K	39 $\pm$ 10%	1V/2.52M	0.14	1.30
RI 0807-470K	47 $\pm$ 10%	1V/2.52M	0.15	1.30
RI 0807-560K	56 $\pm$ 10%	1V/2.52M	0.18	1.20
RI 0807-680K	68 $\pm$ 10%	1V/2.52M	0.20	1.10
RI 0807-820K	82 $\pm$ 10%	1V/2.52M	0.24	1.00
RI 0807-101K	100 $\pm$ 10%	1V/1K	0.28	0.89
RI 0807-121K	120 $\pm$ 10%	1V/1K	0.36	0.81
RI 0807-151K	150 $\pm$ 10%	1V/1K	0.42	0.72
RI 0807-181K	180 $\pm$ 10%	1V/1K	0.57	0.66
RI 0807-221K	220 $\pm$ 10%	1V/1K	0.63	0.57
RI 0807-271K	270 $\pm$ 10%	1V/1K	0.88	0.51
RI 0807-331K	330 $\pm$ 10%	1V/1K	1.05	0.46
RI 0807-391K	390 $\pm$ 10%	1V/1K	1.17	0.44
RI 0807-471K	470 $\pm$ 10%	1V/1K	1.34	0.41
RI 0807-561K	560 $\pm$ 10%	1V/1K	1.72	0.36
RI 0807-681K	680 $\pm$ 10%	1V/1K	1.96	0.33
RI 0807-821K	820 $\pm$ 10%	1V/1K	2.56	0.30
RI 0807-102K	1000 $\pm$ 10%	1V/1K	2.94	0.27

**Test Equipment** Inductance: WK3260B LCR Meter / DC Resistance:HP4338B Milliohms Meter.

### RI0809 Series:

Part Number	Inductance ( $\mu\text{H}$ )	Test Frequency (Hz)	DC Resistance (Ohms) Max	Rated Current (A) Max
RI 0809-100M	10 $\pm$ 20%	1V/2.52M	0.04	2.60
RI 0809-120M	12 $\pm$ 20%	1V/2.52M	0.04	2.60
RI 0809-150M	15 $\pm$ 20%	1V/2.52M	0.05	2.10
RI 0809-180M	18 $\pm$ 20%	1V/2.52M	0.05	2.00
RI 0809-220K	22 $\pm$ 10%	1V/2.52M	0.06	1.70
RI 0809-270K	27 $\pm$ 10%	1V/2.52M	0.06	1.60
RI 0809-330K	33 $\pm$ 10%	1V/2.52M	0.07	1.40
RI 0809-390K	39 $\pm$ 10%	1V/2.52M	0.08	1.40
RI 0809-470K	47 $\pm$ 10%	1V/2.52M	0.10	1.30
RI 0809-560K	56 $\pm$ 10%	1V/2.52M	0.11	1.20
RI 0809-680K	68 $\pm$ 10%	1V/2.52M	0.14	1.10
RI 0809-820K	82 $\pm$ 10%	1V/2.52M	0.16	1.00
RI 0809-101K	100 $\pm$ 10%	1V/1K	0.19	0.90
RI 0809-121K	120 $\pm$ 10%	1V/1K	0.22	0.82
RI 0809-151K	150 $\pm$ 10%	1V/1K	0.27	0.74
RI 0809-181K	180 $\pm$ 10%	1V/1K	0.31	0.71
RI 0809-221K	220 $\pm$ 10%	1V/1K	0.38	0.64
RI 0809-271K	270 $\pm$ 10%	1V/1K	0.53	0.57
RI 0809-331K	330 $\pm$ 10%	1V/1K	0.61	0.51
RI 0809-391K	390 $\pm$ 10%	1V/1K	0.69	0.48
RI 0809-471K	470 $\pm$ 10%	1V/1K	0.89	0.43
RI 0809-561K	560 $\pm$ 10%	1V/1K	1.01	0.40
RI 0809-681K	680 $\pm$ 10%	1V/1K	1.18	0.35
RI 0809-821K	820 $\pm$ 10%	1V/1K	1.57	0.32

**Test Equipment** Inductance: WK3260B LCR Meter / DC Resistance:HP4338B Milliohms Meter.

## Lead Type Fixed Inductors

### RI1006 Series:

Part Number	Inductance (µH)	Test Frequency (Hz)	DC Resistance (Ohms) Max	Rated Current (A) Max
RI 1006-100M	10±20%	1V/2.52M	0.040	3.60
RI 1006-120M	12±20%	1V/2.52M	0.044	3.30
RI 1006-150M	15±20%	1V/2.52M	0.058	2.90
RI 1006-180M	18±20%	1V/2.52M	0.064	2.70
RI 1006-220M	22±20%	1V/2.52M	0.088	2.40
RI 1006-270M	27±20%	1V/2.52M	0.10	2.20
RI 1006-330K	33±10%	1V/2.52M	0.11	2.00
RI 1006-390K	39±10%	1V/2.52M	0.14	1.80
RI 1006-470K	47±10%	1V/2.52M	0.16	1.70
RI 1006-560K	56±10%	1V/2.52M	0.19	1.50
RI 1006-680K	68±10%	1V/2.52M	0.22	1.40
RI 1006-820K	82±10%	1V/2.52M	0.29	1.30
RI 1006-101K	100±10%	1V/1K	0.32	1.30
RI 1006-121K	120±10%	1V/1K	0.38	1.20
RI 1006-151K	150±10%	1V/1K	0.5	1.00
RI 1006-181K	180±10%	1V/1K	0.56	0.84
RI 1006-221K	220±10%	1V/1K	0.78	0.76
RI 1006-271K	270±10%	1V/1K	0.92	0.69
RI 1006-331K	330±10%	1V/1K	1.1	0.62
RI 1006-391K	390±10%	1V/1K	1.3	0.57
RI 1006-471K	470±10%	1V/1K	1.5	0.52
RI 1006-561K	560±10%	1V/1K	1.9	0.48
RI 1006-681K	680±10%	1V/1K	2.2	0.43
RI 1006-821K	820±10%	1V/1K	2.6	0.40
RI 1006-102K	1000±10%	1V/1K	3.2	0.36

**Test Equipment** Inductance: WK3260B LCR Meter / DC Resistance:HP4338B Milliohms Meter.

### RI1008 Series:

Part Number	Inductance (µH)	Test Frequency (Hz)	DC Resistance (Ohms) Max	Rated Current (A) Max
RI 1008-100M	10±20%	1V/2.52M	0.027	4.50
RI 1008-120M	12±20%	1V/2.52M	0.031	4.10
RI 1008-150M	15±20%	1V/2.52M	0.036	3.70
RI 1008-180M	18±20%	1V/2.52M	0.049	3.40
RI 1008-220M	22±20%	1V/2.52M	0.055	3.10
RI 1008-270M	27±20%	1V/2.52M	0.062	2.80
RI 1008-330K	33±10%	1V/2.52M	0.079	2.50
RI 1008-390K	39±10%	1V/2.52M	0.087	2.30
RI 1008-470K	47±10%	1V/2.52M	0.099	2.10
RI 1008-560K	56±10%	1V/2.52M	0.13	1.90
RI 1008-680K	68±10%	1V/2.52M	0.14	1.70
RI 1008-820K	82±10%	1V/2.52M	0.16	1.60
RI 1008-101K	100±10%	1V/1K	0.21	1.40
RI 1008-121K	120±10%	1V/1K	0.24	1.30
RI 1008-151K	150±10%	1V/1K	0.32	1.20
RI 1008-181K	180±10%	1V/1K	0.35	1.10
RI 1008-221K	220±10%	1V/1K	0.45	0.96
RI 1008-271K	270±10%	1V/1K	0.61	0.87
RI 1008-331K	330±10%	1V/1K	0.69	0.79
RI 1008-391K	390±10%	1V/1K	0.78	0.72
RI 1008-471K	470±10%	1V/1K	1.0	0.66
RI 1008-561K	560±10%	1V/1K	1.2	0.60
RI 1008-681K	680±10%	1V/1K	1.4	0.55

**Test Equipment** Inductance: WK3260B LCR Meter / DC Resistance:HP4338B Milliohms Meter.

## Lead Type Fixed Inductors

### RI1010 Series:

Part Number	Inductance ( $\mu\text{H}$ )	Test Frequency (Hz)	DC Resistance (Ohms) Max	Rated Current (A) Max
RI 1010-100M	10 $\pm$ 20%	1V/2.52M	0.022	5.3
RI 1010-120M	12 $\pm$ 20%	1V/2.52M	0.023	4.9
RI 1010-150M	15 $\pm$ 20%	1V/2.52M	0.026	4.4
RI 1010-180M	18 $\pm$ 20%	1V/2.52M	0.033	4.0
RI 1010-220M	22 $\pm$ 20%	1V/2.52M	0.037	3.6
RI 1010-270M	27 $\pm$ 20%	1V/2.52M	0.048	3.3
RI 1010-330K	33 $\pm$ 10%	1V/2.52M	0.055	2.9
RI 1010-390K	39 $\pm$ 10%	1V/2.52M	0.073	2.7
RI 1010-470K	47 $\pm$ 10%	1V/2.52M	0.083	2.5
RI 1010-560K	56 $\pm$ 10%	1V/2.52M	0.092	2.3
RI 1010-680K	68 $\pm$ 10%	1V/2.52M	0.12	2.1
RI 1010-820K	82 $\pm$ 10%	1V/2.52M	0.14	1.9
RI 1010-101K	100 $\pm$ 10%	1V/1K	0.16	1.7
RI 1010-121K	120 $\pm$ 10%	1V/1K	0.20	1.5
RI 1010-151K	150 $\pm$ 10%	1V/1K	0.23	1.4
RI 1010-181K	180 $\pm$ 10%	1V/1K	0.31	1.3
RI 1010-221K	220 $\pm$ 10%	1V/1K	0.34	1.1
RI 1010-271K	270 $\pm$ 10%	1V/1K	0.40	1.0
RI 1010-331K	330 $\pm$ 10%	1V/1K	0.52	0.93
RI 1010-391K	390 $\pm$ 10%	1V/1K	0.65	0.86
RI 1010-471K	470 $\pm$ 10%	1V/1K	0.71	0.78
RI 1010-561K	560 $\pm$ 10%	1V/1K	1.0	0.71
RI 1010-681K	680 $\pm$ 10%	1V/1K	1.1	0.65
RI 1010-821K	820 $\pm$ 10%	1V/1K	1.3	0.59
RI 1010-102K	1000 $\pm$ 10%	1V/1K	1.7	0.53

**Test Equipment** Inductance: WK3260B LCR Meter / DC Resistance:HP4338B Milliohms Meter.

### RI1014 Series:

Part Number	Inductance ( $\mu\text{H}$ )	Test Frequency (Hz)	DC Resistance (Ohms) Max	Rated Current (A) Max
RI 1014-100K	10 $\pm$ 10%	1V/2.52M	0.033	4.0
RI 1014-120K	12 $\pm$ 10%	1V/2.52M	0.035	3.9
RI 1014-150K	15 $\pm$ 10%	1V/2.52M	0.039	3.7
RI 1014-180K	18 $\pm$ 10%	1V/2.52M	0.047	3.5
RI 1014-220K	22 $\pm$ 10%	1V/2.52M	0.051	3.3
RI 1014-270K	27 $\pm$ 10%	1V/2.52M	0.057	3.1
RI 1014-330K	33 $\pm$ 10%	1V/2.52M	0.064	2.9
RI 1014-390K	39 $\pm$ 10%	1V/2.52M	0.074	2.7
RI 1014-470K	47 $\pm$ 10%	1V/2.52M	0.083	2.5
RI 1014-560K	56 $\pm$ 10%	1V/2.52M	0.104	2.3
RI 1014-680K	68 $\pm$ 10%	1V/2.52M	0.117	2.1
RI 1014-820K	82 $\pm$ 10%	1V/2.52M	0.130	1.9
RI 1014-101K	100 $\pm$ 10%	1V/1K	0.143	1.7
RI 1014-121K	120 $\pm$ 10%	1V/1K	0.195	1.5
RI 1014-151K	150 $\pm$ 10%	1V/1K	0.221	1.4
RI 1014-181K	180 $\pm$ 10%	1V/1K	0.26	1.3
RI 1014-221K	220 $\pm$ 10%	1V/1K	0.35	1.2
RI 1014-271K	270 $\pm$ 10%	1V/1K	0.39	1.1
RI 1014-331K	330 $\pm$ 10%	1V/1K	0.52	1.0
RI 1014-391K	390 $\pm$ 10%	1V/1K	0.57	0.92
RI 1014-471K	470 $\pm$ 10%	1V/1K	0.65	0.84
RI 1014-561K	560 $\pm$ 10%	1V/1K	0.79	0.75
RI 1014-681K	680 $\pm$ 10%	1V/1K	0.96	0.69

**Test Equipment** Inductance: WK3260B LCR Meter / DC Resistance:HP4338B Milliohms Meter.